

# Selbu Modern

a free pattern by Kate Gagnon Osborn

*A Fair Isle beret inspired by a traditional Selbu motif knit in Canopy Fingering, a modern and luxurious yarn with beautiful drape and sheen. The color possibilities are endless!*



**Yarn:** The Fibre Company Canopy Fingering, 50% Alpaca, 30% Merino & 20% Bamboo. 200 yards/50 grams per skein. 1 Skein Orchid (MC), 1 Skein River Dolphin (CC).

**Size:** 19" brim circumference, unstretched, 10" diameter at widest point.  
8.75" high from CO to top of hat.

**Gauge:** 30 sts and 36 rows = 4" on 2.75mm (US 2) needles in Fair Isle patt.

\*It is imperative you check gauge. Adjust needle size if necessary to obtain gauge.

**Needles:** 1 set size 2.75mm (US 2) dpn  
1 - 16" size 2.75mm (US 2) circular needle  
1 - 16" size 2.0mm (US 0) circular needle

**Notions:** 8 stitch markers  
tapestry needle  
plate 10" in diameter for blocking

# Selbu Modern

## *Skills necessary include:*

Knitting in the round on both circular and double pointed needles, increasing, decreasing, two color Fair Isle knitting, following a chart and understanding the symbols within.

## *Notes on the Chart:*

Follow chart as written, reading from Right to Left. The stitches shown on the chart represent 1/8 of the total number of stitches; you will work each section eight times per row. You may find it helpful to place markers between each section. The stitch counts shown in the right columns represent the number of stitches in one section. The crown decreases vary between a SSK, K1, K2tog or K2tog, K1, SSK, depending on the desired pattern effect and color being used. It is important you work the decreases as charted for the proper end result.

## *Directions:*

Using smaller needle and CC, CO 128 sts.

Next Row: Switch to MC. Knit 1 row.

Join for working in the round, being careful not to twist sts.

Work in K1, P1 rib for 13 rounds.

Next Row: (K2, M1) around. (192 sts).

Switch to larger needle.

Work rows 1-62 of the chart. (32 sts).

Next Row: sl1, \*K1 (CC), Slip1, K2tog, pss0 (MC); rep from \* around, using 1st slipped stitch at beg of row to work final decrease. (16 sts).

Next Row: sl1, \*K2tog (CC); rep from \* around, using 1st slipped stitch at beg of row to work final decrease (8 sts).

Break CC, leaving appx. 8" tail. Thread end through live sts and pull taught.

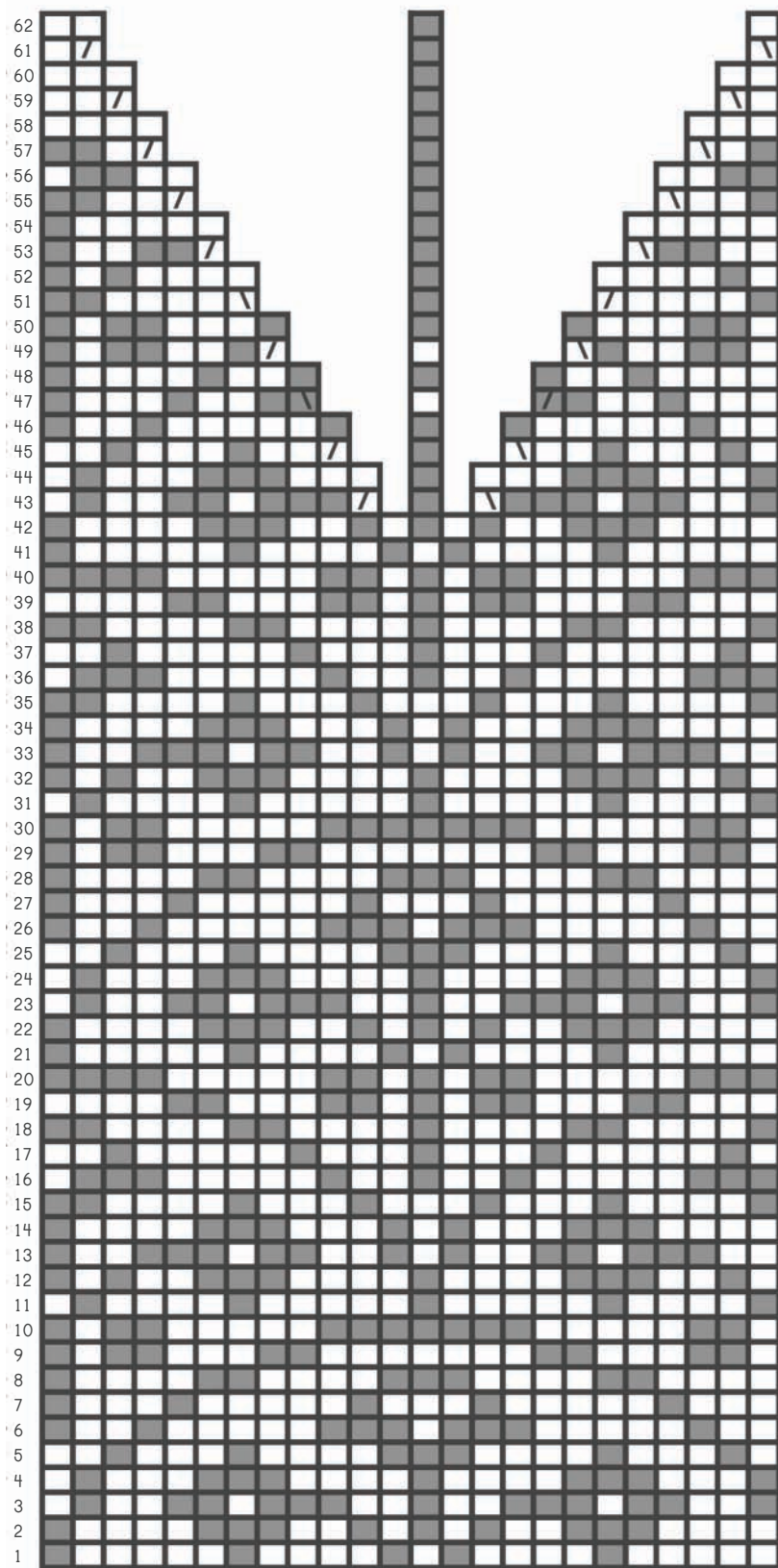
## *Finishing:*

Weave in ends.

Soak in wool-wash and block over 10" diameter plate and allow to dry.

# Selbu Modern

## Chart



### Key:

- Knit in MC
- Knit in CC
- ▤ ▤ Knit two together (right leaning dec).
- ▥ ▥ Slip 1, Knit 1, pass the slipped stitch over (left leaning dec).
- M1: Make 1 increase: Lift the bar between the next sts with left needle, knit into back of loop.
- K2tog: Knit two sts together.
- SKP: Slip 1, Knit 1, pass the slipped stitch over.

If you are a LYS and want information as to how our patterns can work for you, please contact us and we would be happy to help!

© 2008 Kelbourne Woolens. Not to be reproduced, sold or re-knit for profit.

www.TheFibreCo.com • www.KelbourneWoolens.com • info@kelbournewoolens.com